

The Power to make a difference



RRREAL

Rural Renewable Energy Alliance

*Fighting
Energy Poverty with
Solar Power*







Heat or eat?

Energy Assistance Today





Is Energy Assistance a Solution?



SOLution!

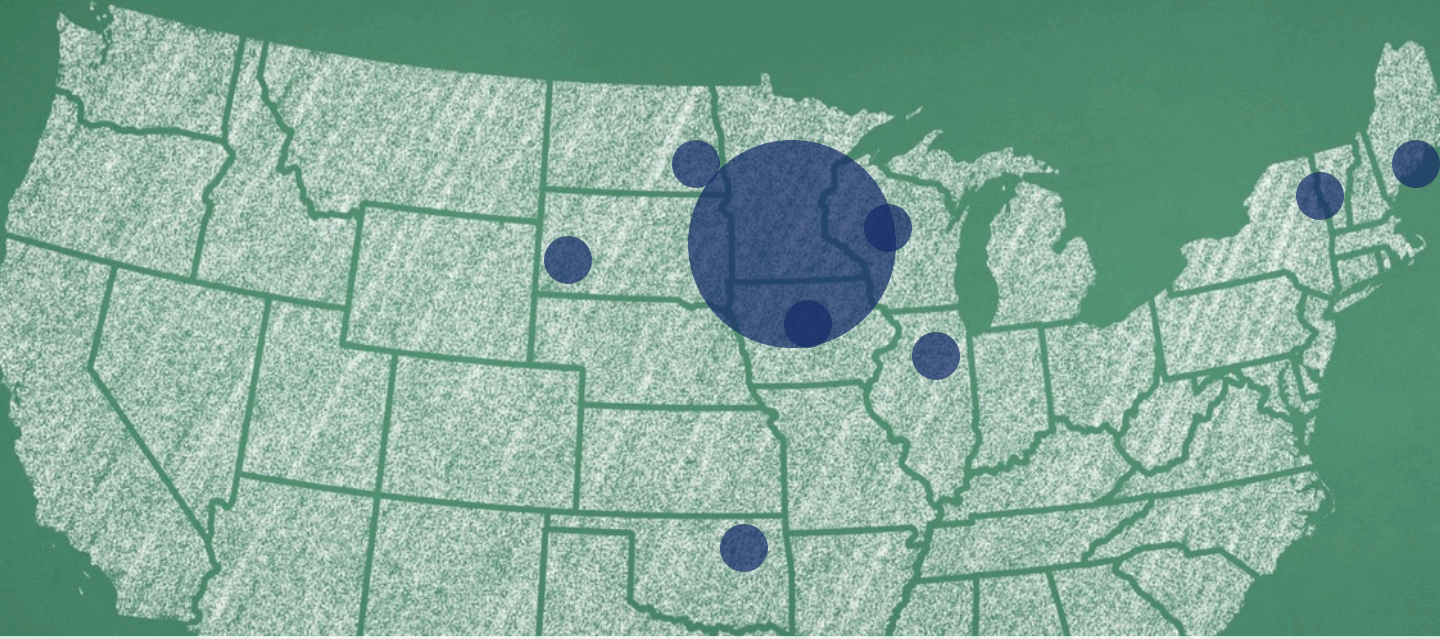


**Solar is the future
of low-income
energy assistance**



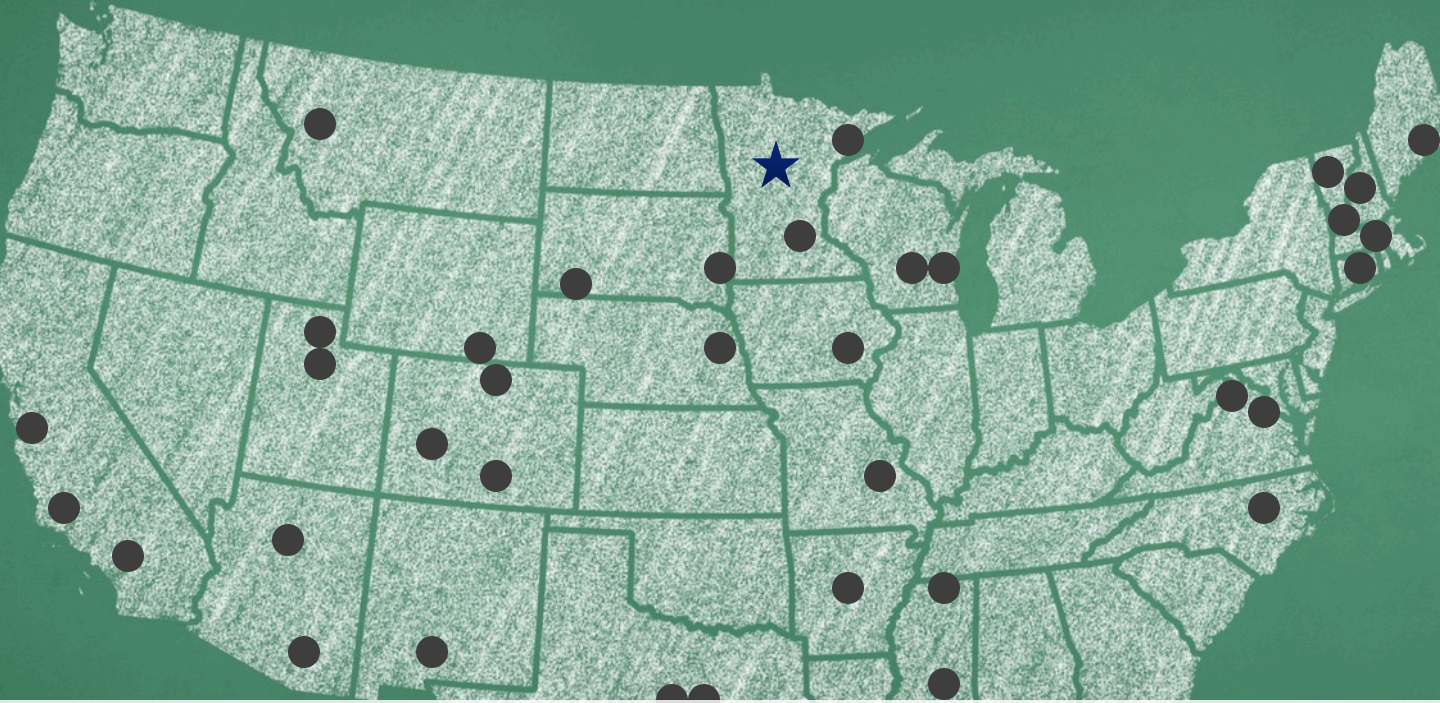
STOP

**What about
energy
efficiency?**



Empowered—not entitled!





Ending the Renewable Divide!

From Energy Assistance to Solar Assistance!





Rural Renewable Energy Alliance

Community Solar *for* Community Action:

A new model of low-income energy assistance!




THE MCKNIGHT FOUNDATION



CLINTON GLOBAL INITIATIVE



An aerial photograph of a solar farm. The solar panels are arranged in three long, parallel rows. In the background, there are several buildings, possibly a school or community center, and some trees. The overall scene is a mix of greenery and brown earth.

*Solar Solutions to
Minnesota Energy Poverty*
Leech Lake Band of
Ojibwe 200kW Community
Solar Assistance Project

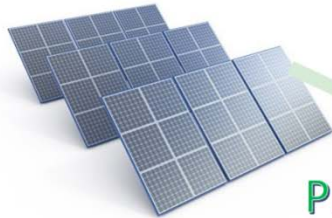
The Power to make a difference



RREAL

Rural Renewable Energy Alliance

&



PPA



Minnkota Power
COOPERATIVE, INC.
Your Touchstone Energy® Partner



Beltrami Electric
Cooperative Inc.

Your Touchstone Energy® Cooperative

MINNESOTA DEPARTMENT OF
COMMERCE



dreamstime.com



dreamstime.com

PRESCOTT 150kW

BEC 50kW

188,000 kWh/year

62,000 kWh/year

**Northern Solar
Subscription**

\$0.1069/kWh

\$26,725/year

**Low-Income
Subscribers**

*(Identified by
LLEAP)*

Project Summary

- **Co-developed with Beltrami Electric Cooperative's planned Northern Solar Community Solar project.**
- **200 kW developed for low-income Band members on energy assistance.**
- **150 kW sited on Leech Lake Reservation Prescott Community Center exclusively for low-income Band members.**
- **50 kW sited at Beltrami Service Center exclusively for low-income Leech Lake Band members.**
- **Additional capacity at Beltrami Service Center for existing and future Northern Solar Subscribers.**
- **Utilizes BEC's existing subscription model for LLBO's portion, with assignment to low-income households for LLBO portion of the array.**
- **LLBO portion of the array treated like remainder of garden in terms of production rate and bill credit mechanism.**
- **Leech Lake Band members subscribe for 1-year terms. Recipients identified annually by Leech Lake Energy Assistance.**



Project Particulars

- Approximately 100 houses served
- Each household gets a 2 kW subscription
- Subscriptions annually transferable
- Households identified annually by EAP
- Reduction of energy burden for 100 households, extends EAP dollars for community

**Solar assistance!
Serving low-income rate
payers with solar energy.**

