

Green & Healthy Homes Initiative

Ruth Ann Norton

June 23, 2015

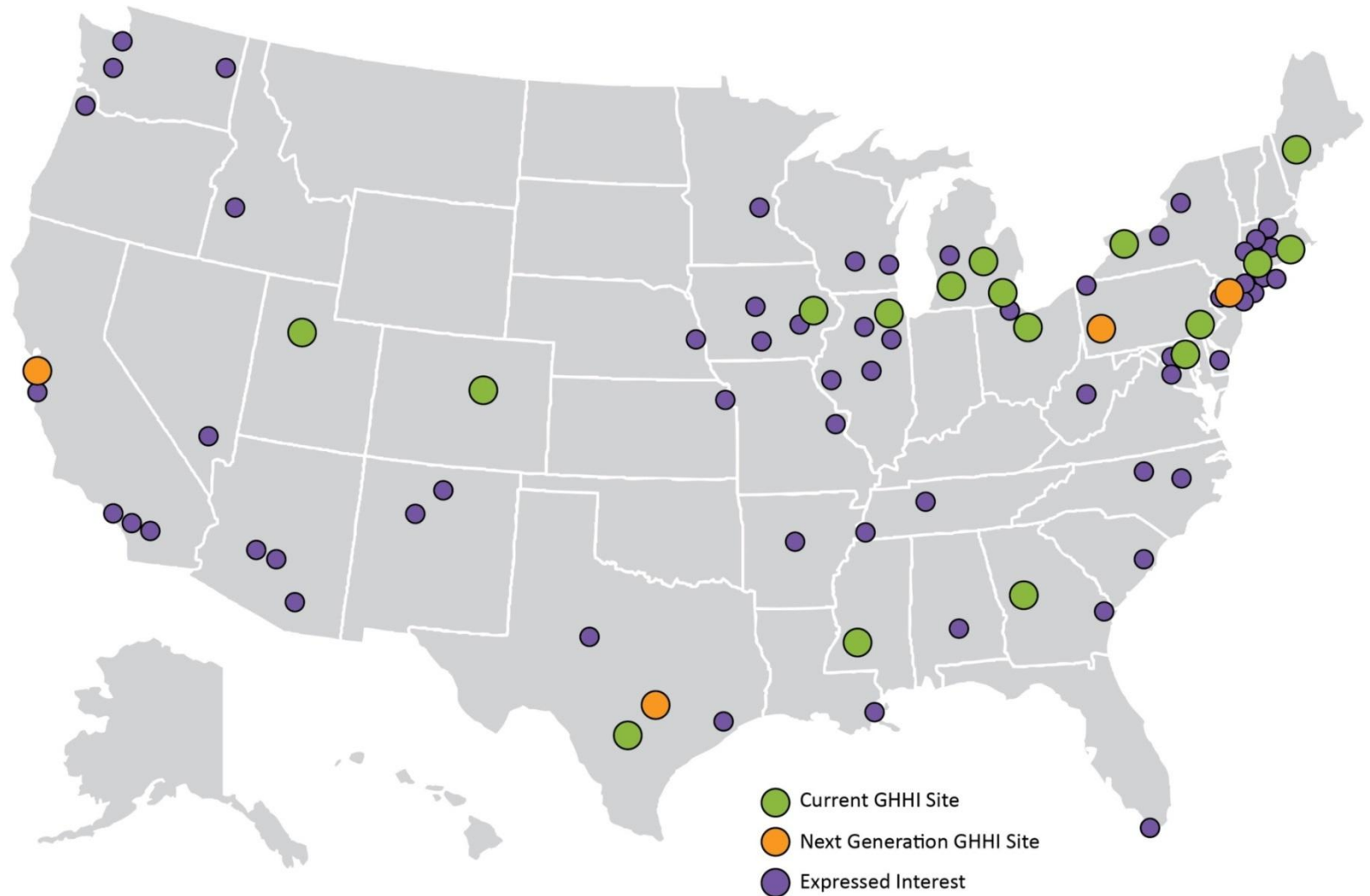
Green & Healthy Homes Initiative

GHHI is dedicated to breaking the link between unhealthy housing and unhealthy families.

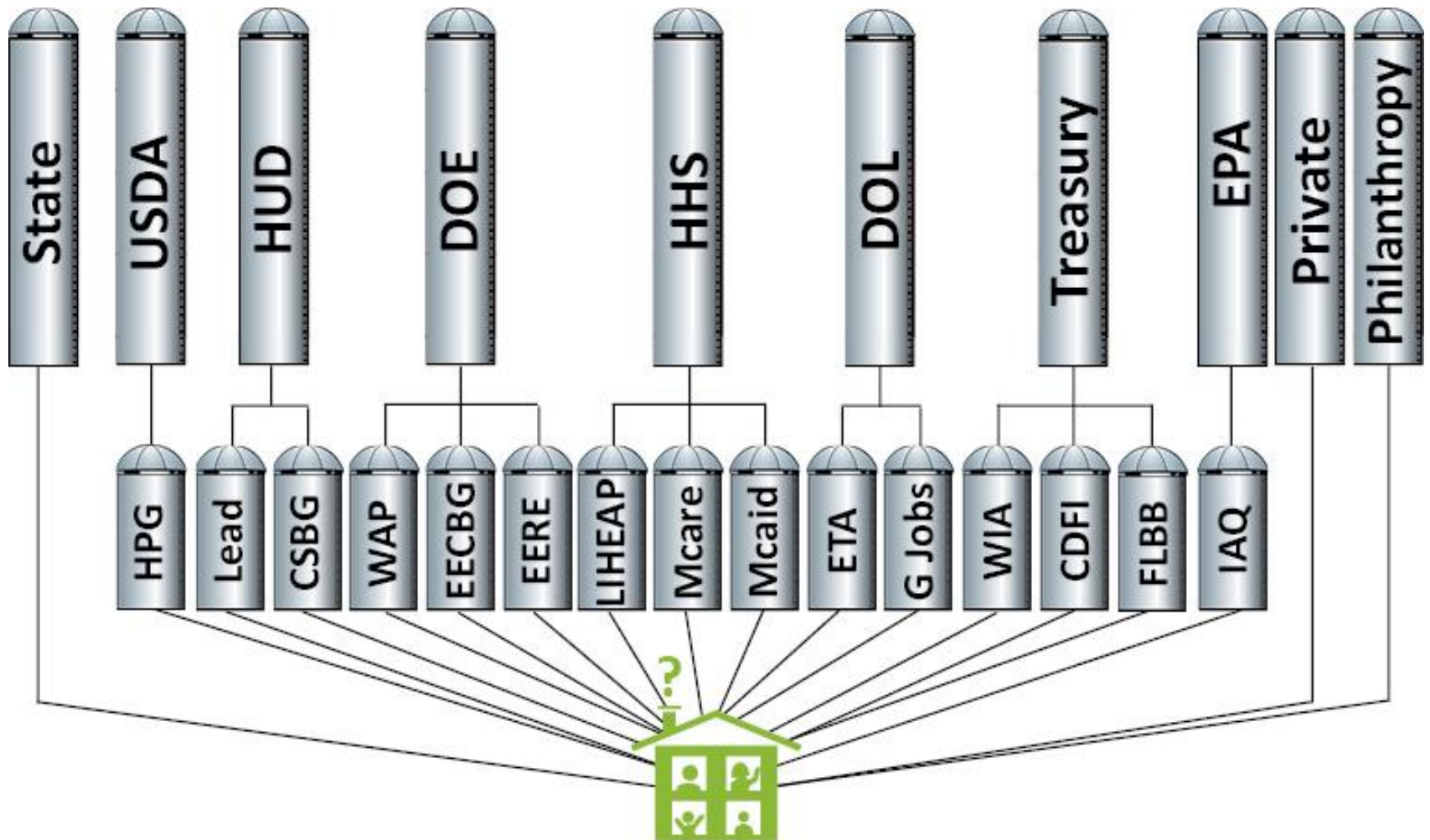
The GHHI model replaces stand-alone housing intervention programs with an integrated, whole-house approach that aligns resources, braids funding and coordinates partnerships to produce healthy, safe and energy efficient homes.

GHHI improves health, economic and social outcomes for low income children, families and seniors.

GHHI National Scaling



Healing a Fractured Delivery System



GHHI Process



National Efforts

- DOE, HUD, CDC, CMS
- Healthy Homes Work Group
- Strategy for Action

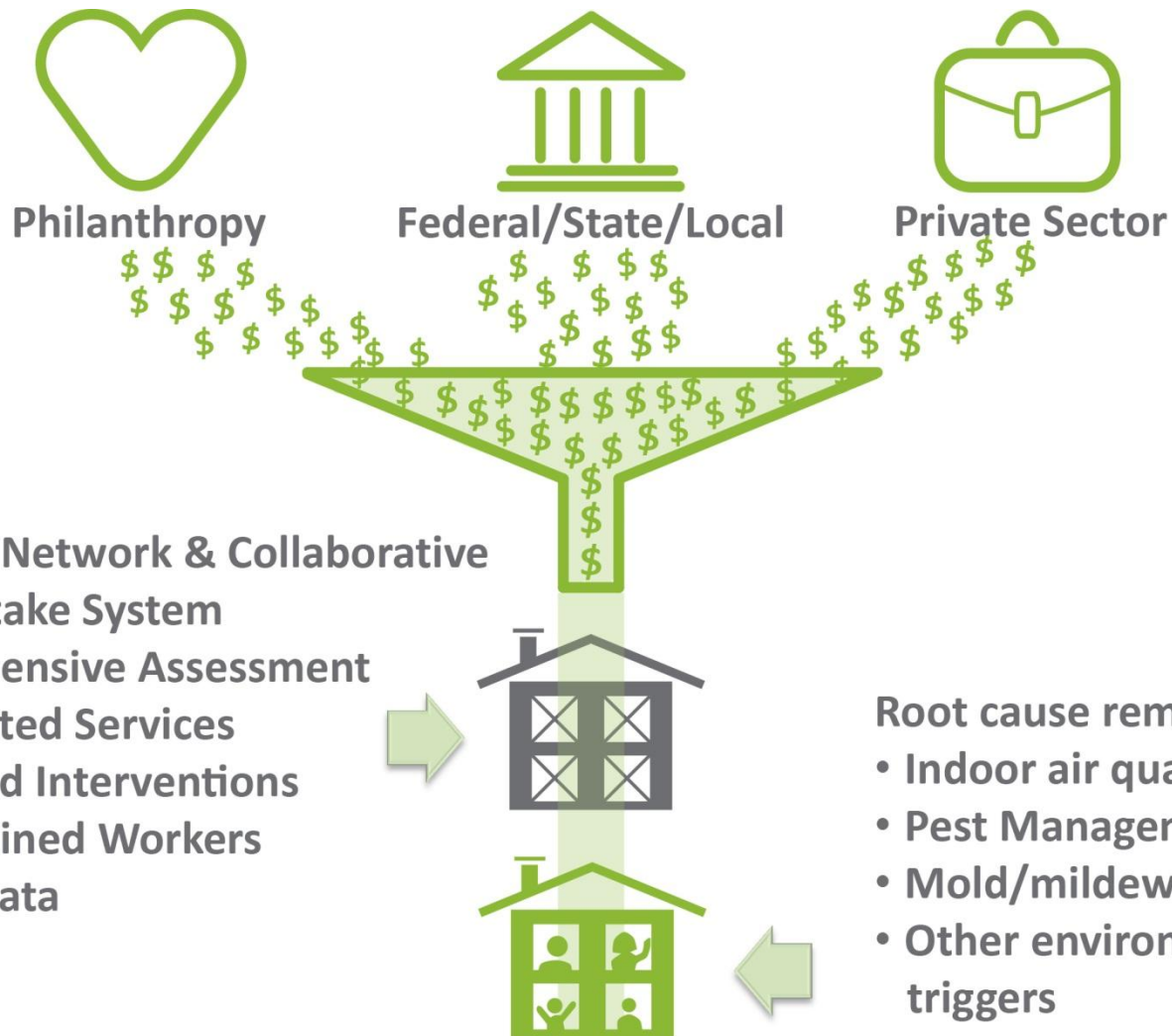
Funding Streams

- Federal
- State
- Private
- Philanthropy

Partners

- Single application
- Common eligibility
- Single audit, improvements, education and data

GHHI - A Model That Benefits Families



Coordinated Interventions Sample

Green	Health & Safety
Energy Audit	Health & Safety Assessment
Weatherization	Lead Hazard Reduction
Insulation	Asthma Trigger Reduction
Reducing Air Infiltration & Leakage	Integrated Pest Management
Energy Efficiency Measures	Trip & Fall Risk Reduction
Remediating Gas Leaks & CO	Fire & Injury Prevention Measures
Energy Efficiency Education	Health & Safety Education

One Family's Story

Dewayne Davis, age 8, suffered from asthma caused by his unhealthy, energy-inefficient home which was full of asthma triggers.



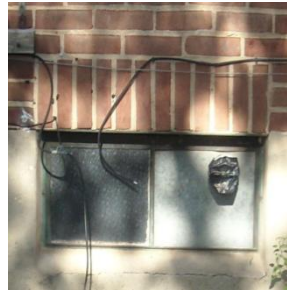
**Old carpets =
allergens**



**Water leaks =
mold hazards**



**Deteriorated
windows = air leaks**



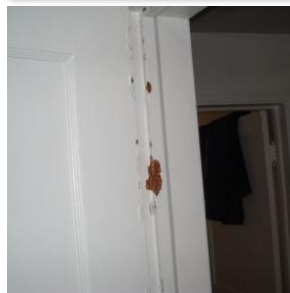
**Broken hot water
heater and furnace**



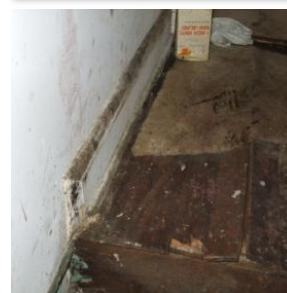
**Defective gutters =
water leaks**



**Chipping paint =
lead hazard**



**Broken tile =
safety hazard**



**Broken ducts =
higher heating bills**

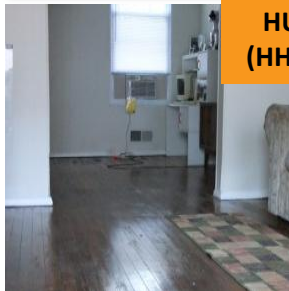


A Solution Through Braiding

An integrated approach cost 25% less to implement (\$12,057 vs \$16,096), has kept DeWayne out of the hospital for asthma related visits, improved his school attendance and reduced the family's monthly heating bills – and helped his mother achieve as well.



Remove old carpets



HUD
(HHDP)

Remediate mold, install dehumidifier



HUD
(HHDP)

Install Energy Star windows



HUD
(HHDP)

Install furnace and hot water heater



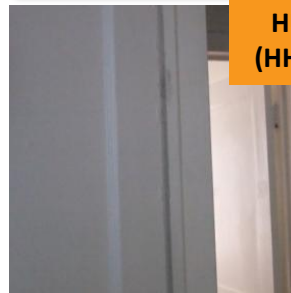
Philanthropy

Replace broken gutters



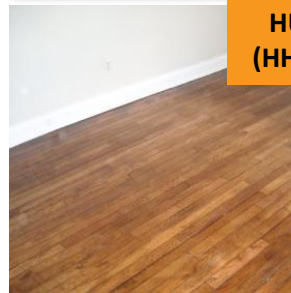
HUD
(HHDP)

Stabilize chipping paint



HUD
(HHDP)

Resurface uneven floors



HUD
(HHDP)

Seal ducts, blow insulation



DOE
(WAP)

Healthy Homes Demonstration Project

Mean Change and Percent Reduction of Key Outcomes

200 units completed with 139 respondents completing 6 month post intervention health surveys

In the past 6 months (N=139)	Intake Mean (StdDev)	6 Month Mean (StdDev)	Pre Post Mean Change (StdDev)	One-sided <i>t</i> test	Percent Reduction
Hospitalizations	0.364288 (0.923013)	0.141791 (0.53667)	0.238806 (0.824248)	0.0008	65.5%
ER Visits	0.942857 (1.22193)	0.701493 (1.097022)	0.261194 (1.250137)	0.015	27.7%
Physician Visits	1.76258 (1.462491)	1.340909 (1.413293)	0.389313 (1.460098)	0.002	22%
Calls to Physicians	2 (1.498792)	1.481203 (1.490381)	0.515152 (1.565296)	0.0002	26%
Work days missed	2.76259 (1.954492)	1.736842 (1.85413)	1.037879 (2.057959)	0.0000	37%
School/ daycare missed	2.372093 (2.008069)	1.787402 (2.091669)	0.647059 (1.998254)	0.0002	27%

Environmental Justice, Vol 7. Number 6, 2014

Impact: Building a Business Case

Green & Healthy Homes Initiative: Improving Health, Economic and Social Outcomes Through Integrated Housing Intervention

- **66%** reduction in asthma-related client hospitalizations
- **28%** reduction in asthma ER visits
- **50%** increase in participants never having to visit the doctor's office due to asthma episodes
- **62%** increase in participants reporting asthma-related perfect attendance for their child (0 school absences due to asthma episodes)
- **88%** increase in participants reporting never having to miss a day of work due to their child's asthma episodes

Environmental Justice, Vol 7. Number 6, 2014

The Full Conversation

Green & Healthy Homes Initiative

& Family Health

& Energy Efficiency

& Housing Affordability

& Education Outcomes

& Public Sector Innovation

& Opportunity

The Key is Integration

Elements of a Green & Healthy Home

Dry

Well-Ventilated

Contaminant-Free

Pest-Free

Well-Maintained

Safe

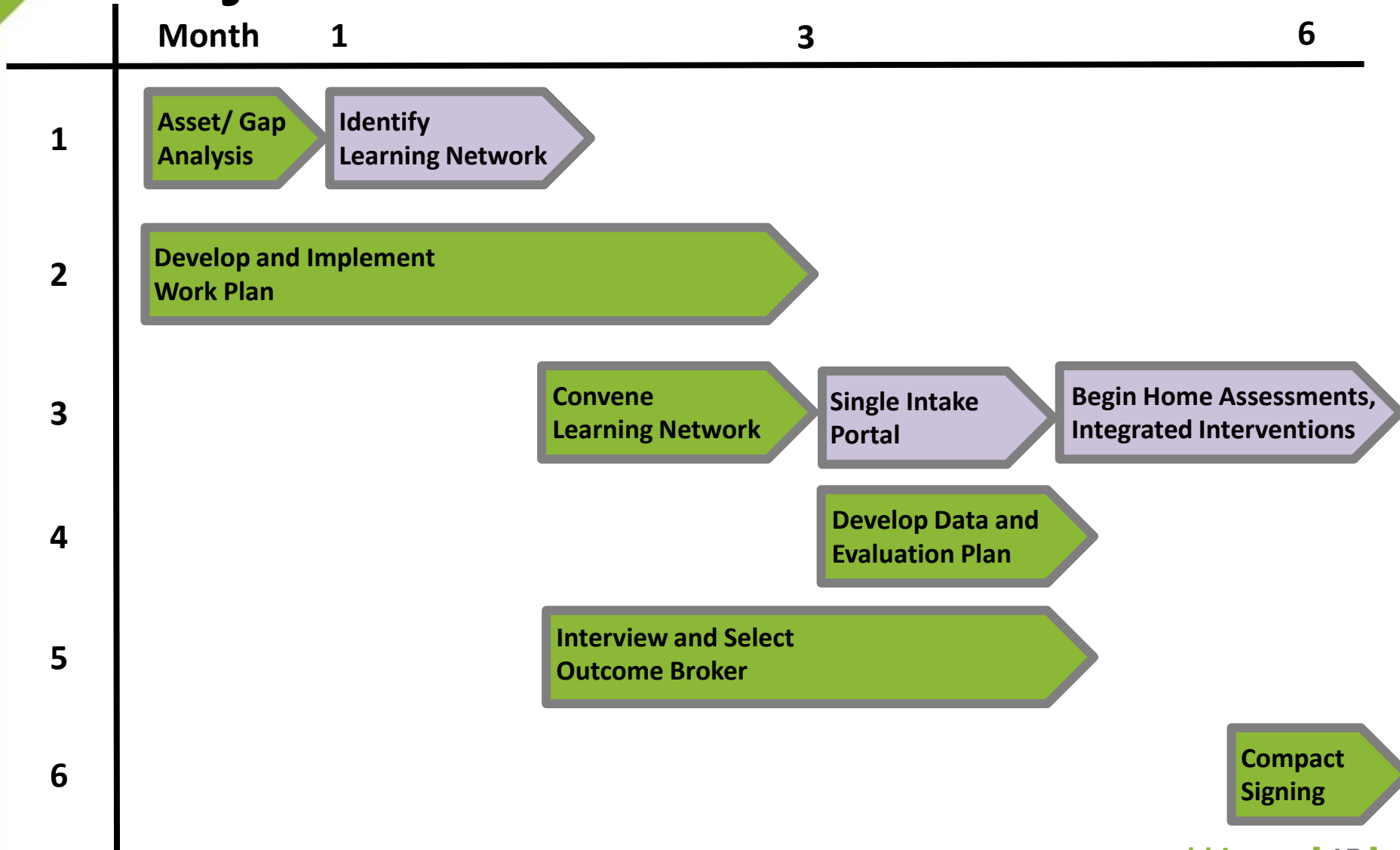
Clean

Energy Efficient

Becoming a GHHI Site

1. Asset and Gap Analysis
2. Local Learning Network Convening
3. Outcome Broker Selection
4. Work Plan Development
5. Compact Signing
6. Data and Evaluation Plan
7. GHHI Designation

Project Timeline



Questions?

Ruth Ann Norton

President & CEO

ranorton@ghhi.org

410-534-6447

[@RuthAnnNorton](https://twitter.com/RuthAnnNorton)

Follow us on Twitter [@HealthyHousing](https://twitter.com/HealthyHousing)

Like us on Facebook [GHHINational](https://www.facebook.com/GHHINational)

Learn more on YouTube [GHHI Videos](https://www.youtube.com/GHHIVideos)

Follow us on LinkedIn [green-and-healthy-homes-initiative](https://www.linkedin.com/company/green-and-healthy-homes-initiative)