

Low-Income Energy Solutions

Krystal Laymon, Policy Advisor

June 27, 2018



Strategic & Interagency Initiatives Team (SI2)

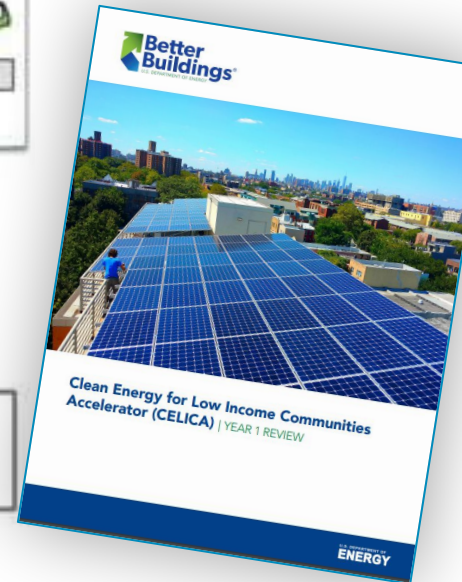


Strategic & Interagency Initiatives Team works on initiatives that provide underserved communities, like low and moderate income and rural communities, with technical assistance to help these communities gain access to more energy choices.

Clean Energy for Low Income Communities Accelerator (CELICA)

Year 2 continued...

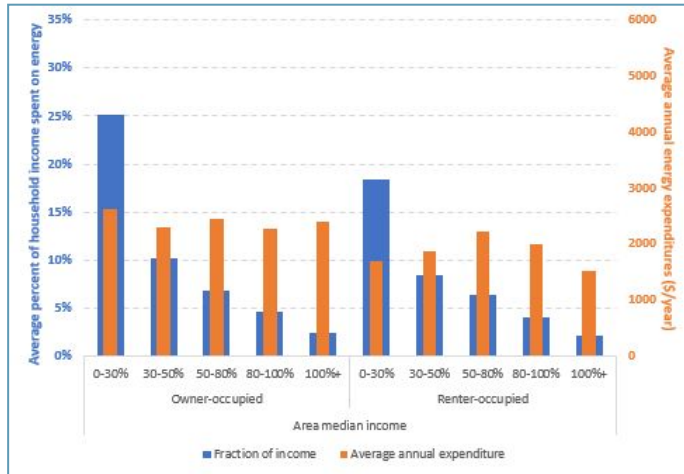
37 partners (14 state, 12 local, 11 community action agencies/non-profits/utilities)



May 2016 – Aug 2018

DOE Low Income Resources Available Now

Low-income Energy Affordability Data (LEAD) tool



CELICA Program Funding Catalog

Clean Energy for Low Income Communities Accelerator										Program Catalog			
Program Name	Lead Agency	Program Focus	Energy Focus	Eligible Areas	Program Description	Eligible Income	Eligible Occupancy	Eligible Energy Services	Eligible States	Program Start Date	Program End Date	Program Status	Program Website
Weatherization Assistance Program (WAP)	U.S. Department of Energy (DOE)	Weatherization	Weatherization	Nationwide	Weatherization assistance for low-income households.	Low to Moderate Income	Single-Family Detached	Weatherization	All States	Ongoing	Ongoing	Active	www.doe.gov
Weatherization Conservation Program (WCP)	U.S. Department of Energy (DOE)	Weatherization	Weatherization	Nationwide	Weatherization assistance for low-income households.	Low to Moderate Income	Single-Family Detached	Weatherization	All States	Ongoing	Ongoing	Active	www.doe.gov
Weatherization Program (WAP)	U.S. Department of Energy (DOE)	Weatherization	Weatherization	Nationwide	Weatherization assistance for low-income households.	Low to Moderate Income	Single-Family Detached	Weatherization	All States	Ongoing	Ongoing	Active	www.doe.gov
Weatherization Program (WAP)	U.S. Department of Energy (DOE)	Weatherization	Weatherization	Nationwide	Weatherization assistance for low-income households.	Low to Moderate Income	Single-Family Detached	Weatherization	All States	Ongoing	Ongoing	Active	www.doe.gov

Energy Efficiency Financing for Low-income Communities

DOEEE-1634

SEE ACTION
STATE & LOCAL ENERGY EFFICIENCY ACTION NETWORK

Energy Efficiency Financing for Low- and Moderate-Income Households: Current State of the Market, Issues, and Opportunities

Financing Solutions Working Group
August 2017

The State and Local Energy Efficiency Action Network is a state and local effort facilitated by the federal government that helps states, utilities, and other local stakeholders take energy efficiency to scale and achieve all cost-effective energy efficiency by 2020.

Learn more at www.seeaction.energy.gov

Low-income Energy Baseline Assessment Guide

Better Buildings
Partner Baseline Assessment Guide
Clean Energy for Low Income Communities

Introduction
The U.S. Department of Energy Better Buildings Clean Energy for Low Income Communities Accelerator aims to lower energy bills in low to moderate income communities through expanded installation of energy efficiency and distributed renewables. Upon joining the Accelerator, partners committed to developing Action Plans after a year. As shown in the diagram below, baselining is a useful approach to informing your planning efforts, and should involve input from a broad range of stakeholders. The following guide was developed by DOE to assist partners with baselining, and identifying needs and gaps to address in action plans.

Baselining
• This initial step provides a baseline of energy efficiency and renewable energy resources and usage.
• Research may include: utility bills, energy audits, energy audits, and utility records.
• Research barriers to participation that need to be addressed with the partner (e.g., affordable housing).
• Engage key stakeholders (e.g., utility providers) to help outline current energy and utility usage.
• Identify key stakeholders and their needs.
• Months 0-6

Planning
• Research to guide the development of an energy efficiency and renewable energy action plan.
• Research barriers to participation that need to be addressed with the partner (e.g., affordable housing).
• Engage key stakeholders (e.g., utility providers) to help outline current energy and utility usage.
• Identify key stakeholders and their needs.
• Months 6-12

Implementing
• This step involves the implementation of energy efficiency and renewable energy measures.
• Research barriers to participation that need to be addressed with the partner (e.g., affordable housing).
• Engage key stakeholders (e.g., utility providers) to help outline current energy and utility usage.
• Identify key stakeholders and their needs.
• Months 12+ (ongoing)

How to Use this Guide
Below is a list of questions to consider in your baseline assessment for low to moderate income (LMI) community energy efficiency (EE), renewables, and other services programs. Note that the language below is meant to serve as a prompt to assist your assessment. Partners may choose to use the questions as a guide or answer directly. In addition, this assessment should be informed by your stakeholder workgroup. Please refer to the Program Catalog for assistance with mapping available programs.

CELICA's Peer Exchange Groups

Identify CELICA Partner Barriers and Interests

Weatherization
and
Renewables

Finance
Mechanisms

Health and
Safety

Engagement
Strategies

Metrics and
Indicators

Community
Solar



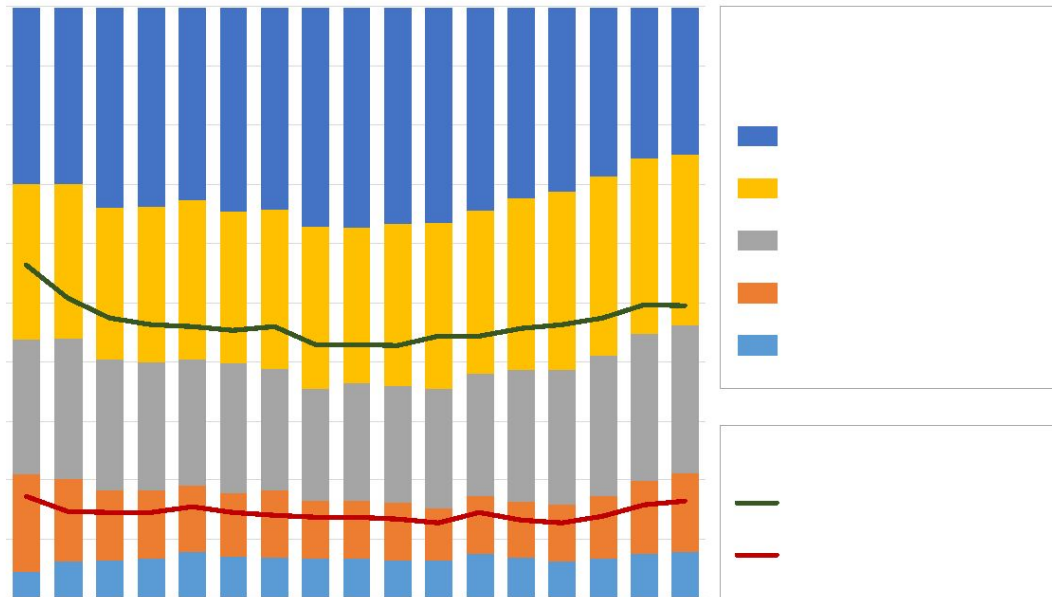
Coming Soon!

Low Income Energy Online Toolkit



PV adoption trending towards more moderate-income households

Income Distribution of PV Adopters by Install Year

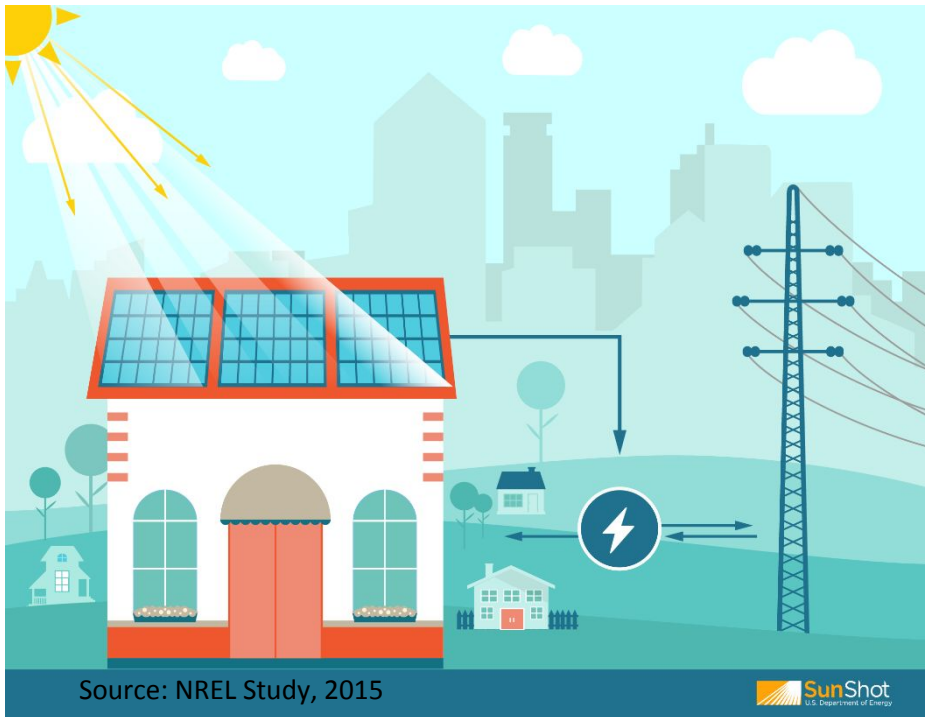


- **2000- 2010:** PV adoption becomes increasingly skewed toward higher income households
- **Since 2010:** Share of adopters from more-moderate incomes steadily increasing

Traditional Rooftop Solar is Limiting

49%

of American households and businesses cannot host solar



- Bad Roof
 - Structural constraints
 - Insufficient roof space
 - Improper roof orientation
 - Shading
- No Control of Rooftop
 - Renters
 - Condos
- Left out of solar market
 - Low credit scores
 - Can't make long-term commitment

Source: NREL Study, 2015

energy.gov/sunshot

 SunShot
U.S. Department of Energy

Low Income Solar Research and Tools

- Alternatives to the credit score
- Clean Energy States Alliance
 - Customer protection for community solar
 - Low income solar + storage financing



- Solar in your Community Challenge resources page:

www.solarinyourcommunity.org/resources

- Solar Curriculum
- Community Solar Project Development
- Customer Acquisition And Program Design
- Financing Solar
- Site Selection, Permitting & Interconnection
- Project Design & Installation
- LMI Participation
- Understanding Solar Policy
- Tools And Research



Interagency Collaborative on Energy Solutions for Low-Income Communities

To promote collaboration between federal agencies on energy initiatives for low and moderate income communities.

- United States Environmental Protection Agency
- United States Department of Agriculture
- United States Department of Energy
- United States Department of Health and Human Services
- United States Department of Homeland Security, Federal Emergency Management Agency
- United States Department of Housing and Urban Development
- United States Department of Transportation, Federal Highway Administration
- United States Department of the Treasury
- The Federal National Mortgage Association

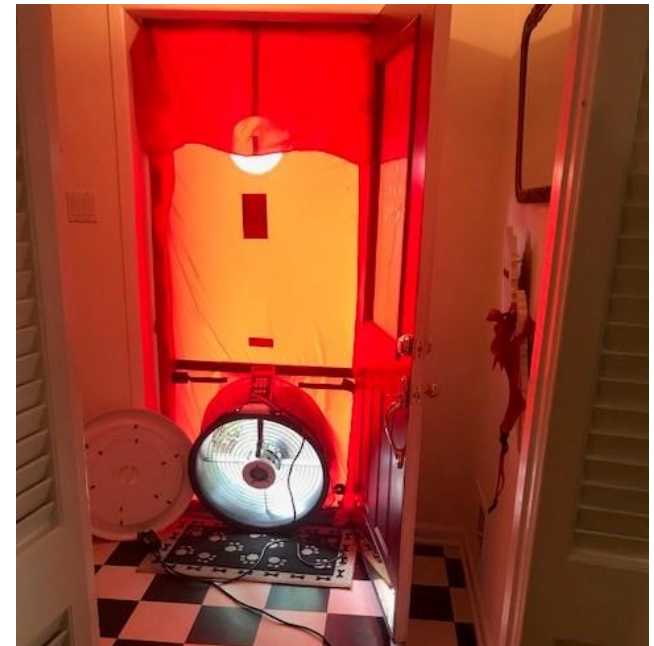
Low-Income Energy Federal Library

The screenshot shows the 'Low-Income Energy Library: Federal Resources and Tools' page. It features a search bar, a category filter on the left, and a table of resources. The table has columns for RESOURCE, SOURCE, and CATEGORY. The resources listed include:

- Better Buildings Challenge Multifamily Sector**: Department of Housing and Urban Development, Data and Assessment Tool: Affordable Housing
- Bringing the Benefits of Energy Efficiency and Renewable Energy to Low-Income Communities**: Environmental Protection Agency, Energy Efficiency, Renewable Energy
- City Energy: From Data to Decisions**: Department of Energy, Data and Assessment Tool: Renewable Energy, Training
- Community Development Block Grant (CDBG) Program**: Department of Housing and Urban Development, Health and Safety, Grants and Funding
- EJSCREEN: Environmental Justice Screening and Mapping Tool**: Environmental Protection Agency, Data and Assessment Tool
- Energy Efficiency and Renewable Energy in Low-Income Communities: A Guide to EPA Programs**: Environmental Protection Agency, Energy Efficiency, Renewable Energy
- Energy Efficiency Financing for Low- and Moderate-Income Households: Current State of the Market, Issues, and Opportunities**: Department of Energy, Finance
- Energy Efficiency in Affordable Housing**: Environmental Protection Agency, Energy Efficiency, Affordable Housing
- Energy Efficient Mortgage Program**: Department of Housing and Urban Development, Finance, Affordable Housing, Energy Efficiency
- Energy Investment Map**: Department of Agriculture, Data and Assessment Tool

Weatherization Assistance Program

WAP's purpose is to develop and implement a weatherization assistance program to increase the energy efficiency of dwellings owned or occupied by low-income persons, reduce their total residential energy expenditures, and improve their health and safety, especially low-income persons who are particularly vulnerable such as the elderly, the handicapped, and children



2018 Better Building Summit!

SAVE THE DATE!



SAVE THE DATE

AUGUST 21-23,
2018
CLEVELAND, OHIO



@BetterBldgsDOE

#EnergyExchange2018

#BBSummit2018



betterbuildingsolutioncenter.energy.gov/summit

Questions?

Krystal Laymon

Office of Energy Efficiency & Renewable Energy

U.S. Department of Energy

Krystal.Laymon@ee.doe.gov